

P.zza Gae Aulenti
Building E1 | E2

MILAN

OFFICES TO LET



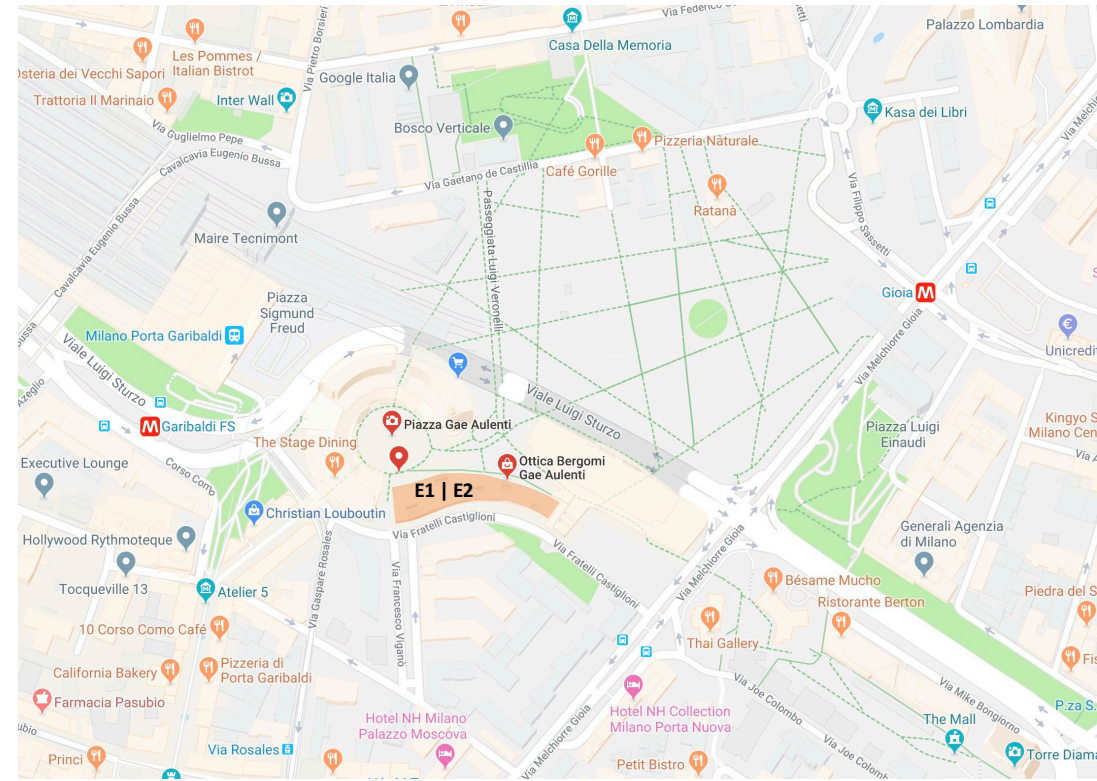
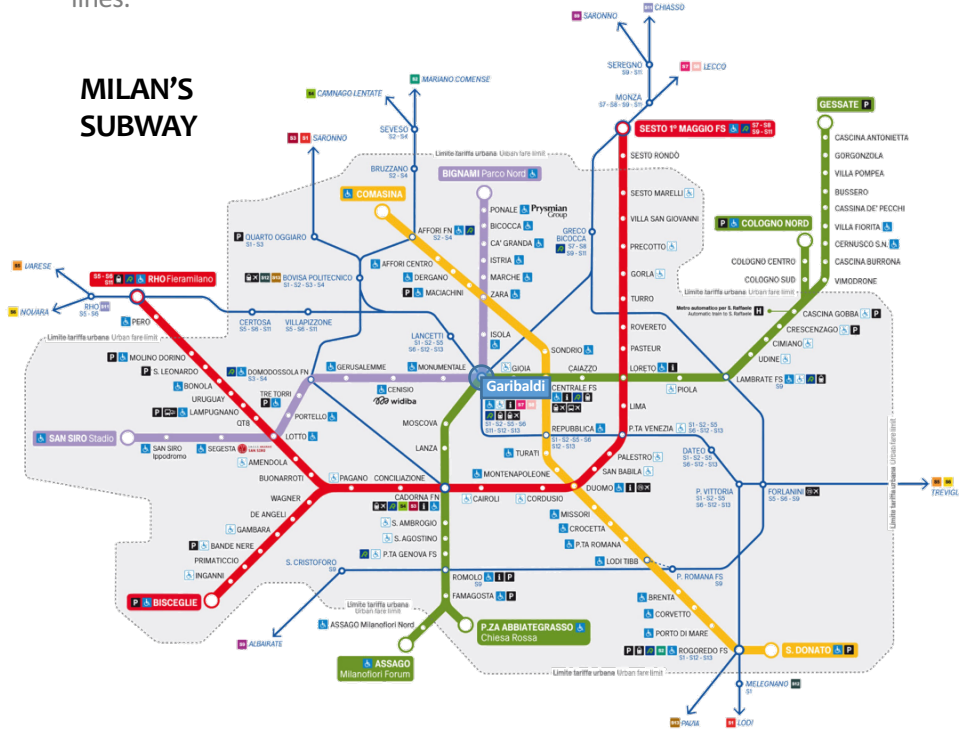
P.zza Gae Aulenti | Building E1-E2 - Milan

LOCATION

Close to Garibaldi and the Central Train station, both served by high speed trains. Less than 2 km away from Piazza Duomo and less than a ten minute walk from San Babila, Castello Sforzesco and Porta Venezia Gardens.

Extremely well served by urban and national public transportation systems, numerous bus/tram stops.

Served by four underground lines, in particular the M2 and M5 metro lines.



Distances

	City Center	2 km
	Centrale station	1 Km
	Garibaldi station	200 m

OFFICES TO LET

P.zza Gae Aulenti | Building E1-E2 - Milan

DESCRIPTION

The Grade A Green office building is 11,200 sqm, five-stories and is located in the southern part of Porta Nuova. Designed by Piuarch firm, the building provides flexible solutions for multi-tenant office users.

It has two lobbies with direct access from the Piazza Gae Aulenti and street level.

Rent: confidential

Service Charges: confidential

Availability: Q4 2019

Grade: A Green (LEED Gold)

Delivery: Cat B including furniture

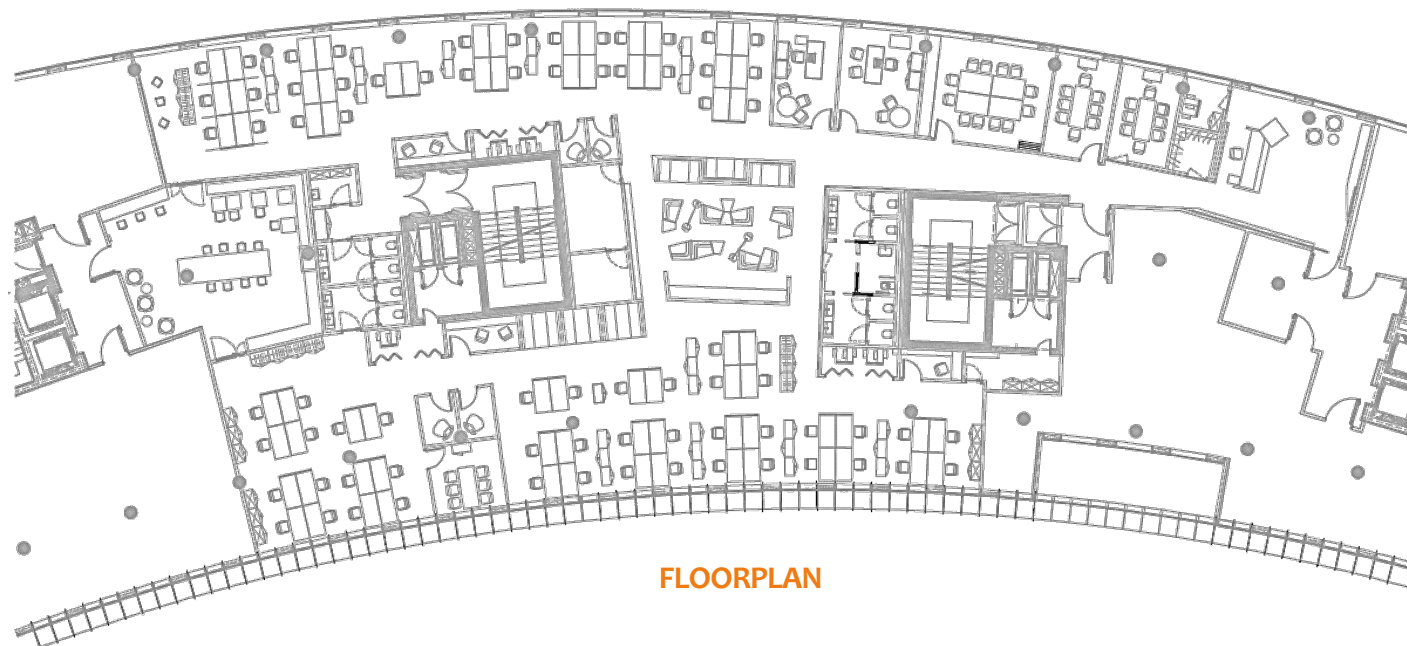
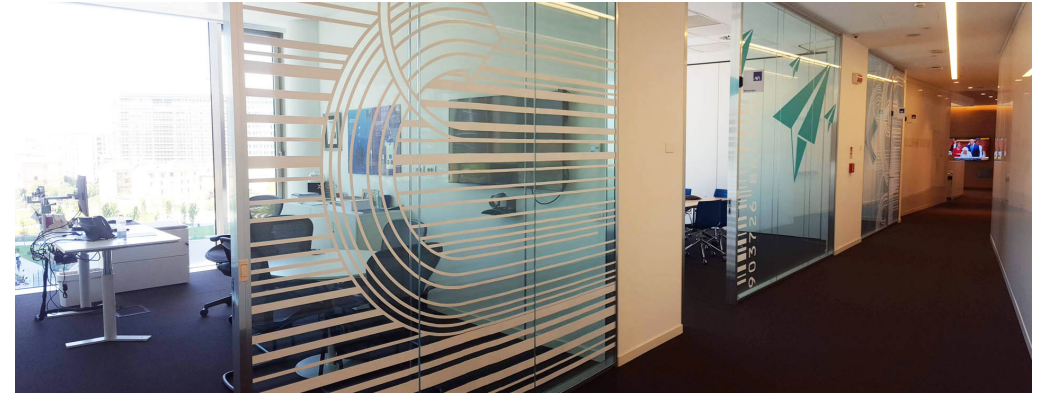


OFFICES TO LET

P.zza Gae Aulenti | Building E1-E2 - Milan

AREA

Floors	Use	Surfaces (sqm)
3	Offices	1,180
-1	Archives	45
-3	Car parking space	5
-1	Motobike parking	10
Office GLA		1,180

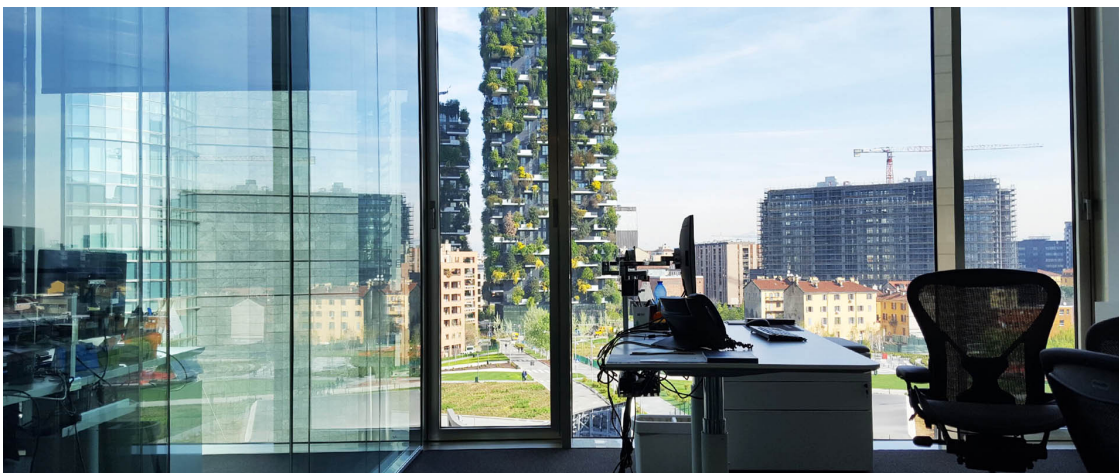
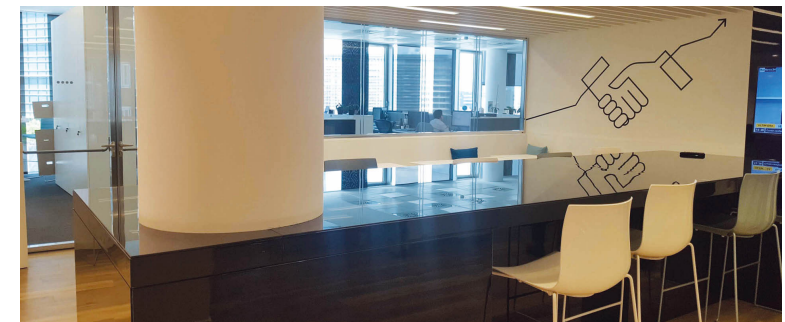
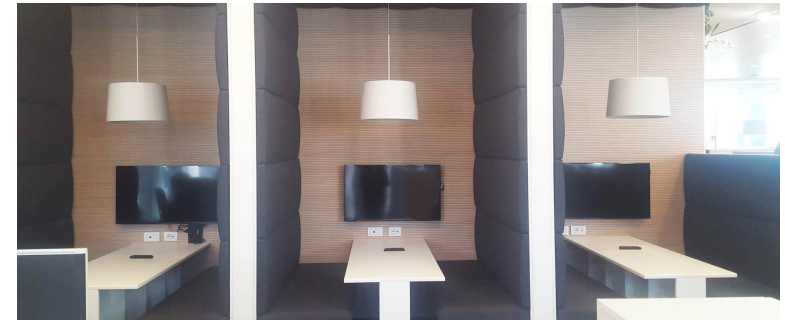


FLOORPLAN

OFFICES TO LET

P.zza Gae Aulenti | Building E1-E2 - Milan

IMAGES



CONTACT

Realty Lab S.r.l.

Via Puccini, 3

20121 Milan

T + 39 02 87 08 48 50

F + 39 02 87 08 48 74

info@realtylab.it

www.realtylab.it

DANIELE PISONI

Senior Consultant – Office Agency

M +39 335 7318857

daniele.pisoni@realtylab.it

Il presente documento è stato predisposto da Realty Lab S.r.l. basandosi su informazioni fornite dalla Proprietà con finalità puramente informativa.

Esso ha unicamente lo scopo di verificare il possibile interesse in merito all'Immobile e non costituisce né un'offerta, né un invito ad offrire, né un'offerta al pubblico o una sollecitazione all'investimento. Esso non comporta alcun impegno a concludere accordi, né alcun diritto a qualsivoglia prestazione da parte di Realty Lab o della Proprietà a qualsiasi titolo.

Ogni soggetto interessato all'Immobile deve effettuare la propria analisi sull'Immobile e deve verificare la correttezza e l'accuratezza delle informazioni fornite, eseguendo un'indagine autonoma. Realty Lab non rilascia alcuna garanzia, esplicita o implicita, in merito all'accuratezza e correttezza delle informazioni fornite, e pertanto Realty Lab non potrà avere alcuna responsabilità derivante dall'utilizzo delle suddette informazioni.